



# Hangout

Hangout is the natural companion of the workplace. A standing table for the flexible and activity-based office. A mobile and easily accessible surface for quick and creative meetings with a focus on new thoughts and perspectives. Here, exposure and shielding come together in a successful combination with gables that work both to pin things up as well as to divide a room.

The furniture is designed with well-balanced dimensions for a light expression. Hangout is as it sounds a place for the spontaneous conversation or meeting, free from wires, technology or other distractions. There is storage under the table top, and a whiteboard can be easily attached for those who wish to do so. Its flexibility is amplified by the fact that the furniture is on wheels and can easily be moved through doorways, in and out of elevators and between offices.

The table can be combined with a variety of elements, materials and colors to create different expressions..

---

<b>Design</b>	ADDI
<b>Environment</b>	Indoor
<b>Material</b>	The frame consists of 70 % recycled metal and is powder coated. The powder coating provides both environmental and quality benefits as no solvents need to be added and the amount of waste is minimum. The table surface is made of FSC certified laminated or veneered chipboard.
<b>Paint/Lacquer</b>	Powder coated metal, clearcoated veneer.
<b>Country of origin</b>	Sweden
<b>Certificates</b>	EN 15372:2016 Vertical static load test on main surface 1250 N Horizontal durability test 15 000 cycles
<b>Pre assembled</b>	Partial assembly required, see assembly instructions.
<b>Repairability</b>	Tabletop, soundabsorber, casters and whiteboard can be replaced. Veneered tabletop can be re-lacquered.
<b>Features</b>	Lockable castors and sound absorbing gable.

**MIZETTO**

## Standard colours

### Tabletop



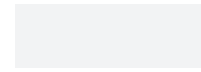
Oak



Ash



Anthracite

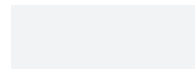


White

### Frame

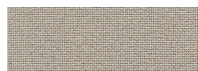


Black

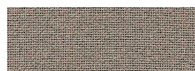


Signal White

### Gable



Camira - Beltone  
EJ193



Camira - Spray  
EJ033



Camira - Merrick  
EJ048

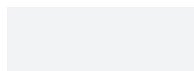
### Writing board



Anthracite  
Safety Glass

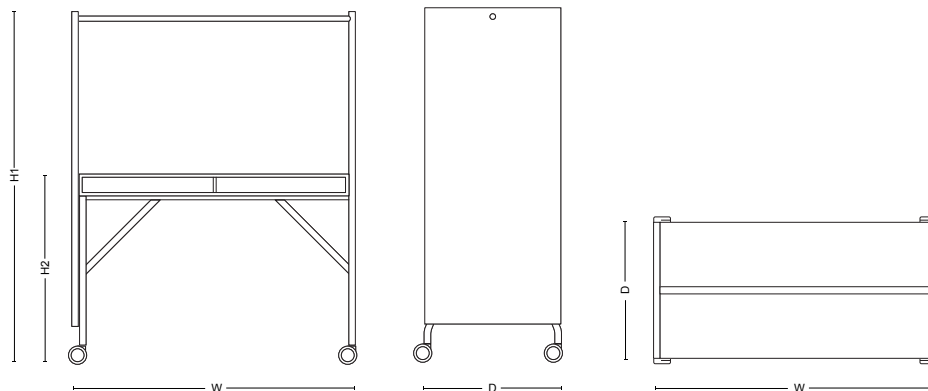


Pale Grey  
Safety Glass



Signal White  
Safety Glass

## Dimensions



### Hangout

H1: 1950 mm, 76.8"

H2: 1050 mm, 41.4"

W: 1550 mm, 61"

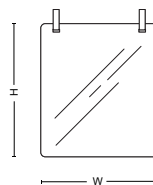
D: 757 mm, 29.8"

## Accessories

### Writing Board

H: 790 mm, 31.1"

W: 695 mm, 27.4"



## Downloads

Visit [mizetto.com](http://mizetto.com) for more information and digital library.

# MIZETTO